



Bridges Wharf, Battersea

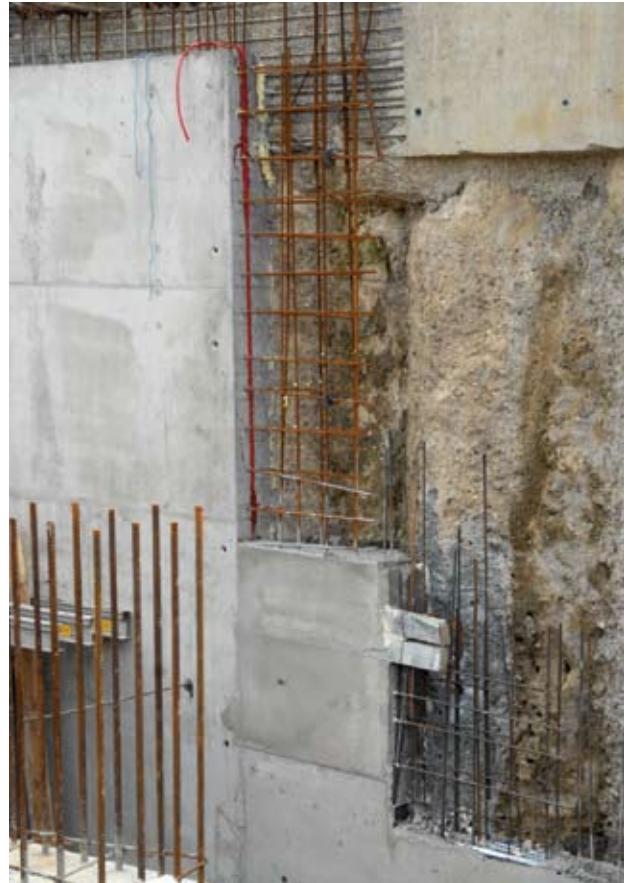
Sika Watertight Concrete System

Sika Concrete System:	Watertight Concrete System, SikaSwell® Jointing System
Client:	Weston Homes
Architect:	Chantrey Davies
Consulting Engineers:	Train and Kemp
Contractor:	Coinford Construction
Concrete Supplier:	London Concrete

Bridges Wharf, Battersea

Sika Watertight Concrete is being used to provide a dry environment in the basement car park areas of the prestigious Bridges Wharf development, that is currently under construction for developer Weston Homes, on a site adjacent to the London Heliport in Battersea. Designed by award winning architects Chantrey Davies, the development will comprise three blocks in a stepped and curving design, incorporating over 250 luxury apartments, over 8,000 square metres of commercial space, two stories of underground car parking and a new head office, hotel, spa and restaurant for von Essen hotels. The Heliport will also be considerably upgraded as part of the development.

Being built on a high water table right next to the River Thames, it is imperative that water is prevented from ingressing the underground car park areas. To ensure a dry environment, consulting engineers Train and Kemp specified the **Sika Watertight Concrete** system. This system is ideal in developments such as Bridges Wharf where space is tight, as the overdig requirement is reduced compared to traditional membrane solutions.



London Concrete are supplying over 3,000 cubic metres of the **Sika Watertight** mix – which has a long and successful track record and meets BS8102 grade 3 protection for ventilated residential and working areas – to main contractor Coinford Construction for use in the basement areas and retaining walls. Construction joints in these areas are being sealed with the **Sikaswell®-P** and **Sikaswell®-S** systems.

The Bridges Wharf development is due for completion in 2009.

Sika Concrete Systems

Specialist Concretes

Corrosion resistant concrete
Micro-silica concrete
Underwater concrete
Early strength concrete
Self-compacting concrete

Admixture Range - premix and precast concrete

Concrete admixtures
Mortar admixtures
Grouting admixtures
Powdered admixtures

Watertight Concrete

Solutions for basements and swimming pools
Watertight jointing systems
BBA certified
40 year track record



For further information or to discuss your project requirements
E-mail concrete@uk.sika.com or telephone **01707 394444**

Sika Limited, Watchmead, Welwyn Garden City, Herts, AL7 1BQ
Tel: 01707 394444 Fax: 01707 329129 e-mail: concrete@uk.sika.com www.sika.co.uk