

Business Unit: Contractors - Flooring

Date Of Issue: November 2009

Multi-Storey car park gets full Sika make-over

A comprehensive package of Sika flooring systems has been used to completely rejuvenate the Moorfield car park at Truro in Cornwall.

One of the key issues to address was the flexural cracking to the concrete decks, caused by the large span widths between support columns. This was solved with Sikafloor 350N car park deck membrane which has excellent dynamic and static crack-bridging properties, even at low temperatures (down to -20 degrees Celsius). This specialist car park decking system is extremely hard wearing, and has excellent abrasion, slip and chemical resistant properties.

There was also a requirement to re-profile one of the ramps to lower the gradient to prevent vehicles with low ground clearance from 'bottoming out'. This was achieved with Sika Armocrete a flowable, cementitious, micro-concrete repair system.

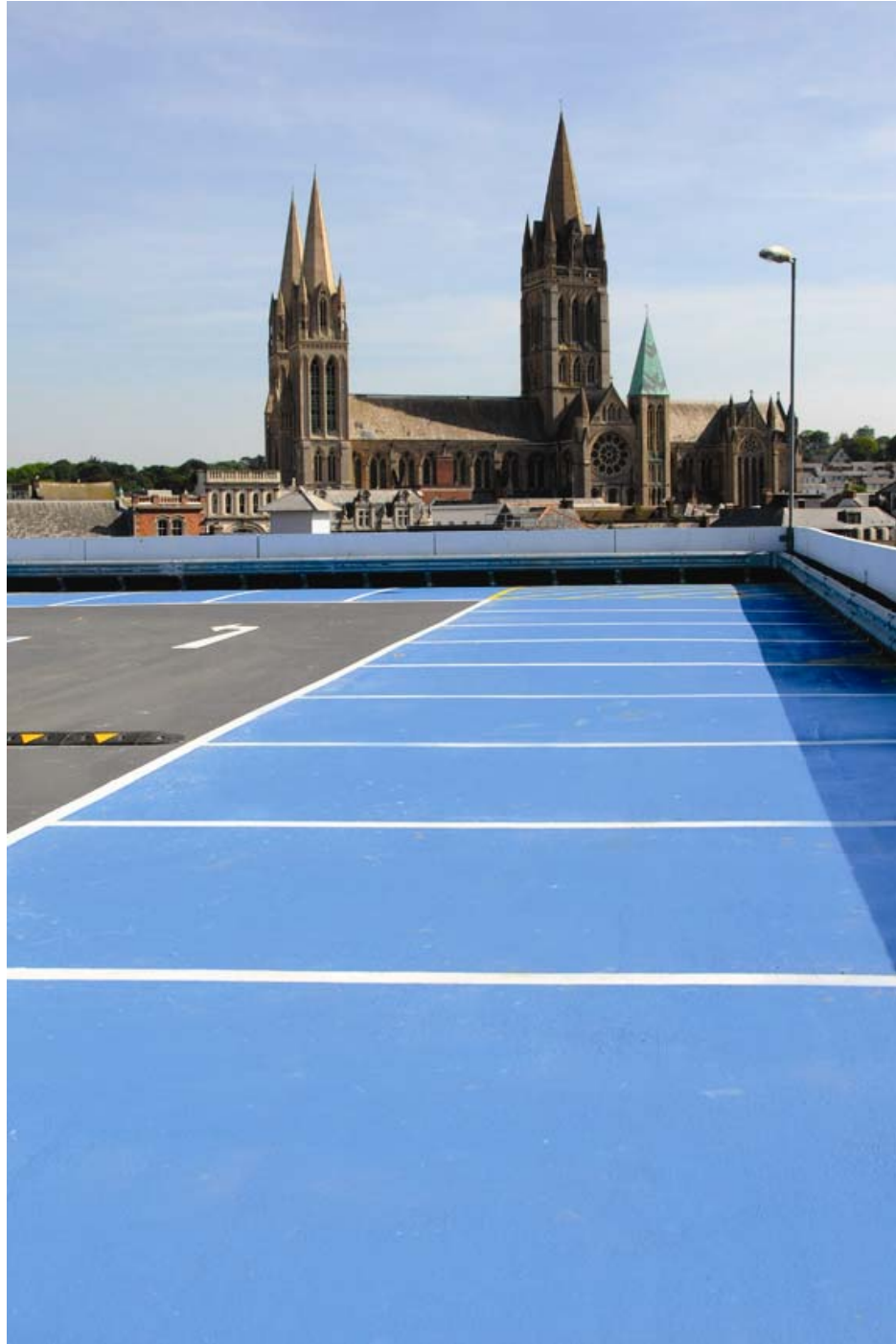
Remedial work on the parapet walls was also needed and Sikagard 675W provided the perfect solution. This is a flexible anti carbonation coating which was available in a range of colours to match the existing finishes to the car park.

To minimise downtime during the repair programme all the ramps and walkways were coated with Sikafloor Pronto. This is a fast cure system which can be trafficked within hours of application, even at low temperatures

Steve Cocker of Sika commented, "Cornwall Council were very pleased with the end result as the project was completed to their exact specifications well within the timescale set. They now have a car park that has a much extended lifespan and is aesthetically an asset to the City."



Press Release



Multi-Storey car park gets full Sika make-over



Sika Limited, Watchmead, Welwyn Garden City, Hertfordshire, AL7 1BQ
Tel: 01707 394444 / Fax: 01707 329129 www.sika.co.uk